

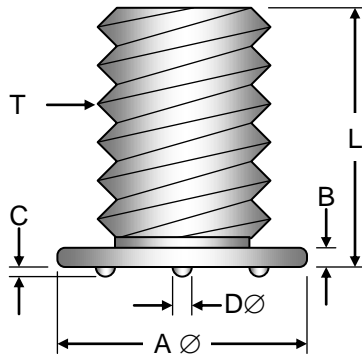
# Cutlass Fasteners, Inc.

83 Vermont Ave., Unit 6, Warwick, RI 02888  
 Tel: (401) 732-6333 Fax: (401) 732-6336  
 cutlass-studwelding.com

## Stud Welding...

- Fasteners
- Equipment
- Service

## RESISTANCE WELD SCREWS (GW)



T (Thread)	A Ø	B	C	D Ø
6-32	0.250	0.041	0.020	0.050
8-32	0.313	0.047	0.025	0.070
10-32	0.375	0.063	0.040	0.080
10-24	0.375	0.063	0.040	0.080
1/4-20	0.500	0.078	0.040	0.100
5/16-18	0.618	0.094	0.045	0.120
3/8-16	0.740	0.109	0.050	0.130

Thread Size	Material	Part No. Prefix	L (Length ± 0.015")												
			1/4	3/8	1/2	5/8	3/4	7/8	1.0	1.1/4	1.1/2	1.3/4	2.0	2.1/2	3.0
6-32 UNC	Mild Steel	8101-	0308	0312	0316	0320	0324	0328	0332	0340	0348	0356	0364		
	Stainless	8102-	0308	0312	0316	0320	0324	0328	0332	0340	0348	0356	0364		
8-32 UNC	Mild Steel	8101-	0408	0412	0416	0420	0424	0428	0432	0440	0448	0456	0464		
	Stainless	8102-	0408	0412	0416	0420	0424	0428	0432	0440	0448	0456	0464		
10-32 UNF	Mild Steel	8111-		0512	0516	0520	0524	0528	0532	0540	0548	0556	0564	0580	0596
	Stainless	8112-		0512	0516	0520	0524	0528	0532	0540	0548	0556	0564	0580	0596
10-24 UNC	Mild Steel	8101-		0512	0516	0520	0524	0528	0532	0540	0548	0556	0564	0580	0596
	Stainless	8102-		0512	0516	0520	0524	0528	0532	0540	0548	0556	0564	0580	0596
1/4-20 UNC	Mild Steel	8101-		0812	0816	0820	0824	0828	0832	0840	0848	0856	0864	0880	0896
	Stainless	8102-		0812	0816	0820	0824	0828	0832	0840	0848	0856	0864	0880	0896
5/16-18 UNC	Mild Steel	8101-				1020	1024	1028	1032	1040	1048	1056	1064	1080	1096
	Stainless	8102-				1020	1024	1028	1032	1040	1048	1056	1064	1080	1096
3/8-16 UNC	Mild Steel	8101-				1220	1224	1228	1232	1240	1248	1256	1264	1280	1296
	Stainless	8102-				1220	1224	1228	1232	1240	1248	1256	1264	1280	1296

Part number example....1/4-20 X 1.0 SS GW WELD SCREW....8102- 0832

Non-Stocked sizes and non-standard diameters and/or lengths are available by special order....minimum order quantities may apply.